

### SPECIAL CALIFORNIA ISSUE



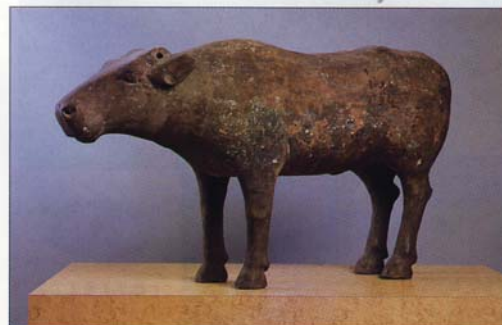
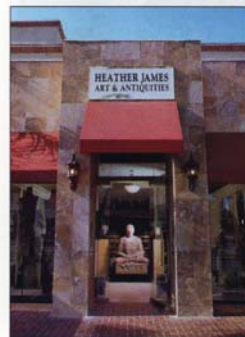
### The Finishing Touch

It's a family affair at **Paul Boyko's** small Manhattan workshop, where Boyko works alongside his father, Paul, his mother, Louise, and his sister, Cheryl Fitzpatrick, hand-painting decorative finishes on furniture and accessories. These finishes have been coveted by designers such as **Sister Parish**, **Albert Hadley** and **Mark Hampton**. "A lot of the work we do represents our long association with Mark Hampton," says Boyko. "We call one of our most popular finishes the Mark Hampton Chippy White." "I started working with Paul while I was Mark Hampton's assistant," says **James David Petersen** (right, with Boyko, left). "They're very painterly about whatever style they're doing. They make an already desirable piece even more valuable." To the trade.

Paul Boyko, 320 East 95th St.  
New York, NY 10128; 212-410-0614



### Worldly Treasures



**D**rawn in by the commanding storefront on El Paseo Drive in Palm Desert, California, **Thomas Allardyce** and **Illya Hendrix** were equally impressed by the ethnic art inside **Heather James Art & Antiquities**. "It's like walking into a museum," says Allardyce. Heather Sacre and Jim Carona fill their shop with artifacts from around the world—ancient Greece and Egypt, Indonesia (mask, left), Southeast Asia, Africa and pre-Columbian New World items. "We look for beautiful objects of high quality that have great provenance," says Carona. "Thirty pieces now in our shop were in major museums." The designers are especially fond of the Han Dynasty pieces (left). "There's something there to meet everyone's fancy," says Allardyce.

Heather James Art & Antiquities  
73-080 El Paseo Dr.  
Palm Desert, CA 92260  
760-346-8926

### Lights On

Inspired by the work of **Sam Maloof** and **Allan Adler**, **Clark Collins**, owner of **Broad Beach Design**, created a lighting collection combining superior quality and reasonable prices. His 12 lamps are made of materials such as cork (below), slate and marble.

Broad Beach Design  
2677 Centinela Ave.  
Santa Monica, CA 90405  
310-399-0251  
[www.broadbeachdesign.com](http://www.broadbeachdesign.com)

